

Features

- Insulated
- Compact
- Heavy Duty Collectors
- Pin/Bolted Joint
- Finger Safe
- Curved Section
- Colour Coded

Applications

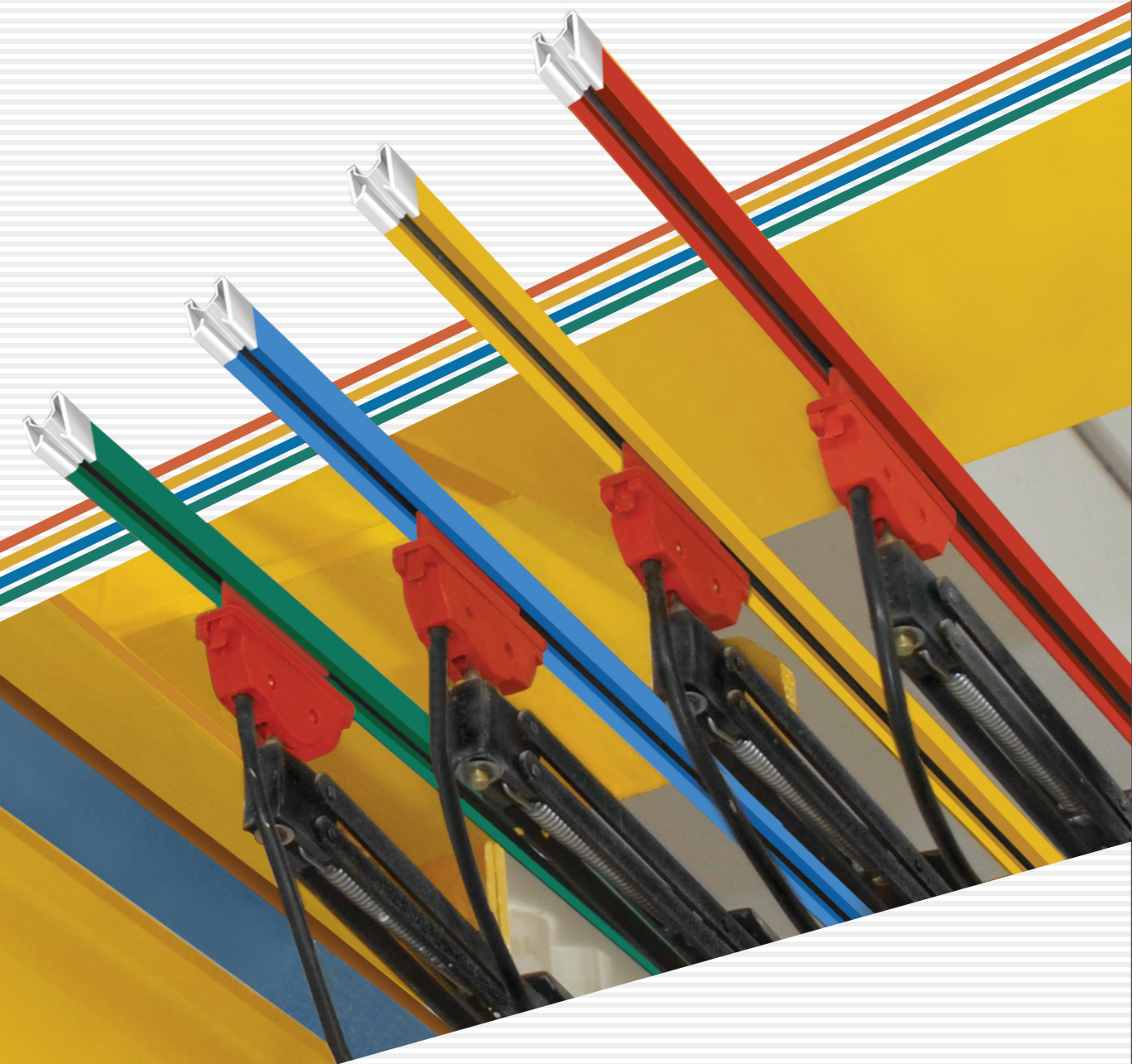
- Cranes
- Hoists
- Monorails
- Conveyors
- Container-handling
- Electrically Operated Equipments



Office
Aji G.I.D.C., Phase-II, Road-Q,
Shead No.K-1 243/11, B/H. Melt Tech,
Rajkot-360003 (Gujarat) INDIA

Phone: +91-281-2389285
Tel.Fax: +91-281-2385381
Cell: +91 98795 64445, 98252 16374
E-mail : info@dslbusbar.com, dslbusbar@gmail.com
Web : www.dslbusbar.com

Extraordinary Strength for Powerful Performance...



www.brandaid.co.in

SafePower

Compact Shrouded Conductor BUS BAR System

Safe Power

Safe Power insulated conductors find varied power supply applications. They are designed and developed to meet stringent international standards.

The conductors occupy less space, are compact, insulated, and easy to install in horizontal or vertical position than conventional bare conductor systems. The 4 metre long conductor bars are supported at every metre resulting in less installation cost. The bars are provided with connecting pins. The conductors can be easily assembled at a site with the use of joining tools. They can be mounted with a uni/multi pole arrangement. They can even be mounted side by side with a minimum distance of 30 mm. The company also manufactures curved conductors.

Galvanised iron conductor - rated 100A

Copper conductor - rated 250A

S.S. conductor - rated 40A

Mounting

The conductors are supported by insulated hanger clamps. Standard mounting brackets are available or customized as per requirement.

The conductors can be mounted horizontally or vertically. Minimum clearance is not required with other structures.

Feed Terminals

The power feed point can be positioned anywhere along the run. It is possible to have one or more power feed point positions to reduce drop in voltage.

Feed terminal clamps should be installed at rail joints.

End Caps

End caps cover the open end and end feeds of conductors.

Collector

A sliding type collector is moulded from strong, designed glass filled nylon. This design produces a compact unit that is fully insulated from the support bracket.

S.S. spring ensures adequate contact pressure.

Expansion Joints

Expansion joints are supplied with the conductors to contain the effects of temperature change when the system run exceeds 200M-G.1 and 150 M-copper.

Installation

The conductors can be installed in any type of environment such as chemical, grimy, unclean, dusty, acidic etc.

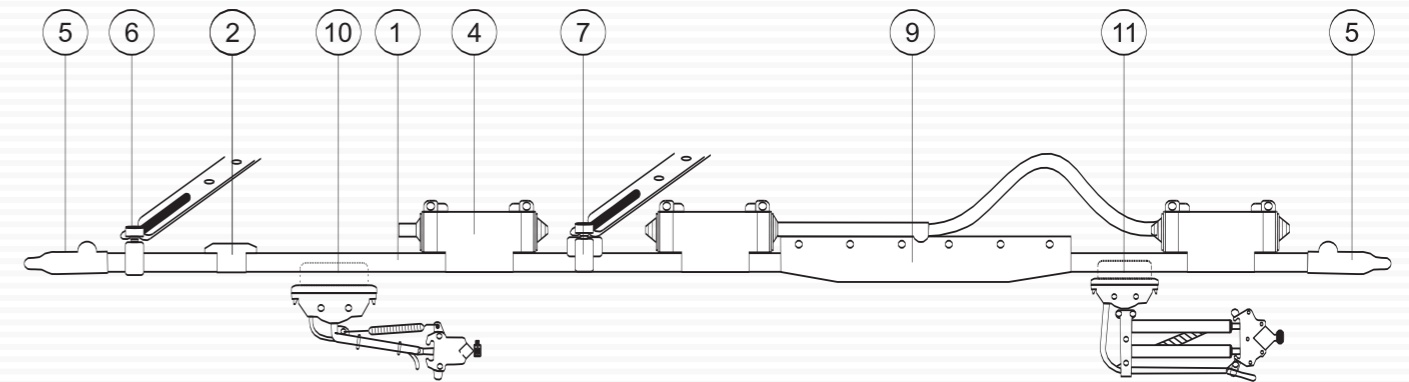
As crane gantry is not completely free or levelled, the company designs adequate lateral/vertical tolerances on collector. The conductors are suitable for outdoor applications as well.

No Periodic Maintenance

Contact shoes are the only consumable items provided with the conductors. Hence, no maintenance is required at regular intervals.

Benefits over Angle Iron Conductor System

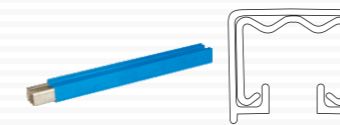
1. Insulated
2. Safe to run
3. No chance of accident
4. Colour coded R Y B G
5. Require less space
6. No need for a protection guard
7. No spark as spring loaded current collector provides pressurized electrical contact
8. Resistant to different climate conditions
9. S.S. conductors function in harsh conditions



Collector and conductor support brackets are available.

1. Bar, cover and pin assembly - 4 mts. long

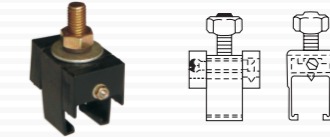
No. 101



- 125/100A Rolled G.I. Conductor assembly
- 315/250A Rolled Cu-conductor assembly
- 40A Rolled S.S. Conductor assembly
- Max. working temp. 80°C

6. Anchor clamp

No. 106



Plastic moulded snap-on type with self anchoring feature for use at anchor points.

2. Crimping tool

No. 102



Moulded plastic one piece clip-on cover.

7. Joining tool

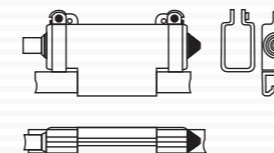
No. 107



Special assembly tool required to connect bars on-site.

3. Centre power feed kit

No. 103



Kit comprising power feed clamp, fixing nuts and bolts and insulating cover.

8. Expansion assembly

No. 108



Complete factory assembled unit of 2 mts. over all length.

4. End cap

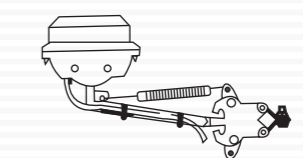
No. 104



Kit comprising stop bolt and PVC push-on insulating cover.

9. 125A S type collector

No. 109



For use with hoist applications. Straight runs only.

5. Hanger clamp

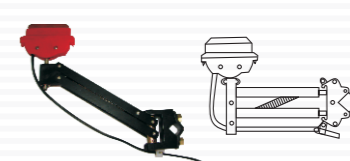
No. 105



Plastic moulded snap-on type support.

10. 125 D type collector

No. 110



For use on straight/curved systems.

Technical date

Conductor spacing: Indoor 30 mm min/Outdoor 40 mm min. For working temperatures exceeding 80°C, consult our technical department.

Note: Tandem collectors are required when expansion sections are fitted.